

**Issue:** I am running my SQL server in VMware, do I need to use Bridged or NAT connection?

**Answer:** We advise you to use Bridge connection; this means you are using the IP address setting local in the VMware.

Under "Virtual Machine Settings" => "Network adapter", NAT:

Device status, Connected: Uncheck

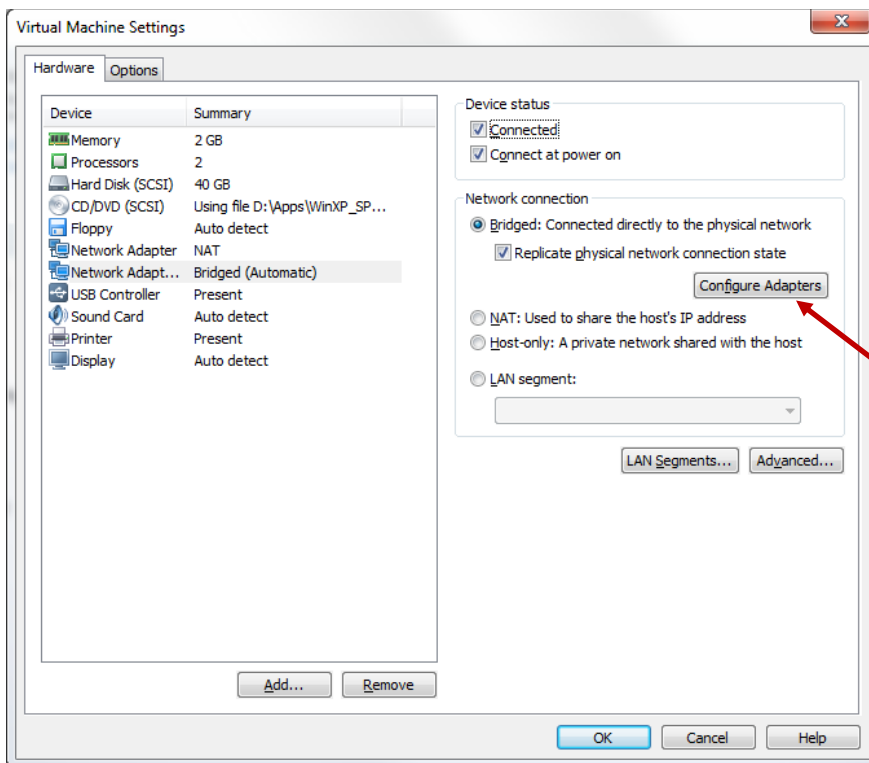
Under "Virtual Machine Settings" => "Network adapter", Bridged:

Device status, Connected: Check

Device status, Connect at power on: Check

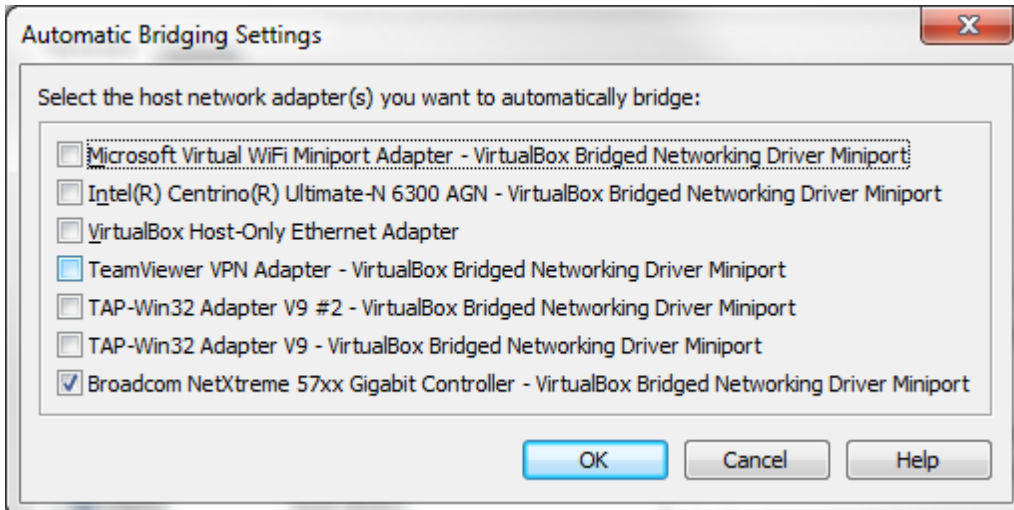
Network connection, Bridged: Select

Network connection, Replicate phys...: Check

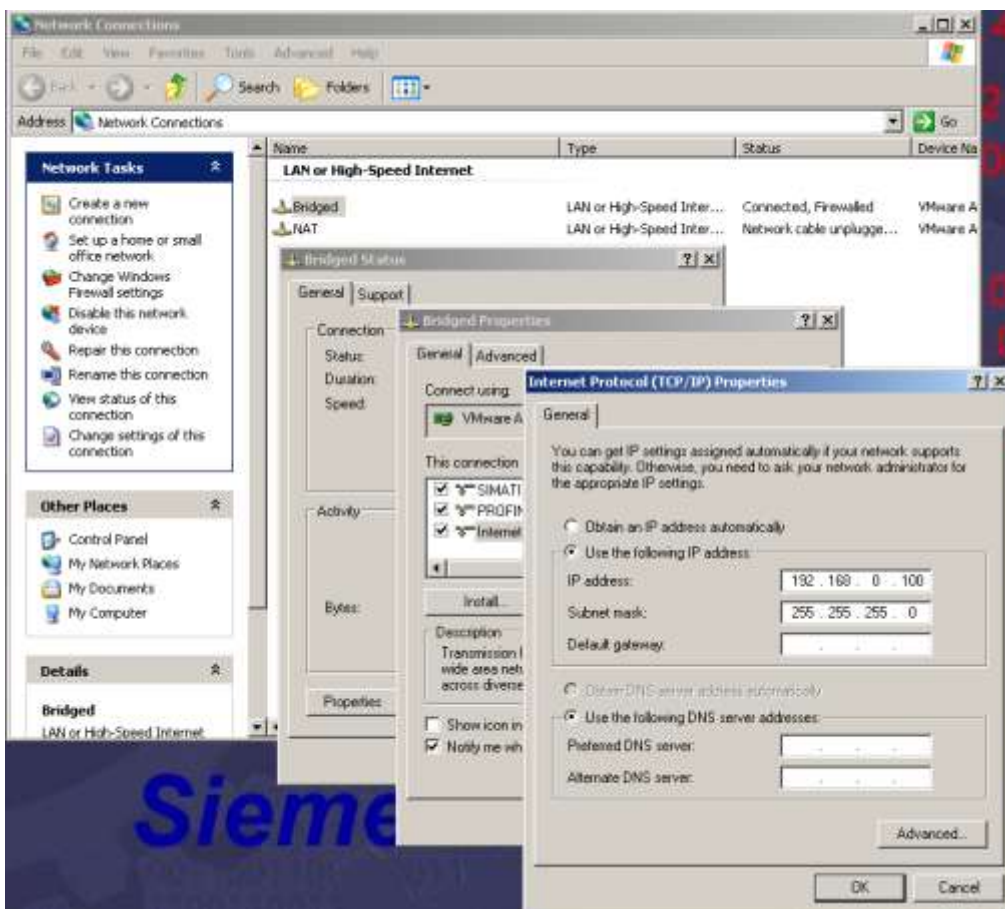


Under “Configure adapters” check which physical Netcard, the adapter is linked to e.g. do you want to use Wired Ethernet or Wireless.

Not all VMWare players have this feature. This opens a risk for the Bridged adapter to link at a wrong Netcard. This then means no communication. In this case you might deactivate the netcards not used.



You need to set IP address, for the Bridged connection in VMWare.





Try to Ping your virtual machine from another PC on the network.

Besides check your firewall on the virtually machine, possibly turn off, firewall until you have seen the communication is up and running.

Remember that Server and PLC must be on the same subnet, unless you are using router, and have assigned the router in HW-Configuration.